



# iFIX 5.8 R2 from GE Digital

## Driving Decision Support for Operators with High Performance Visualization

### Fourth generation HMI/SCADA increases efficiency & reduces costs

With just a glance, operators should be able to recognize which information requires their attention and what it indicates. They should know potential problems and the right actions to take.

You can enable smart operators with new fourth generation HMI/SCADA. The new iFIX 5.8 R2 from GE Digital leverages the latest technologies that help deliver better time to insight and efficiency for your operations, and drive faster time to solution for system integrators.

[iFIX 5.8 R2](#) offers an intuitive user experience, reduces execution errors, and improves operator response time to events and incidents. This new generation of software combines proven HMI/SCADA capabilities—used by thousands of organizations around the globe—with best-in-class new features.

#### Outcomes

- Speed response with context-driven navigation based on a powerful model structure
- Reduce troubleshooting time with higher situational awareness, using efficient HMI layouts and navigation
- Enable action anywhere, anytime with native responsive web design
- Minimize maintenance time and costs with zero deployment clients
- Increase change management efficiency with centralized development and deployment
- Enable superior design flexibility for consumption of third-party HTML5 content



### 01 Find information easily with a context-rich HMI based on the model structure

This context-rich HMI changes as the user moves through the system. Navigation is derived from the model structure built by the engineer. The context follows the asset definition and is defined only once for a class of assets. This prescribed experience provides the operator with the most relevant information—in context—and minimizes the effort to find it.

### 02 Speed operator response with HMI layouts that facilitate situational awareness

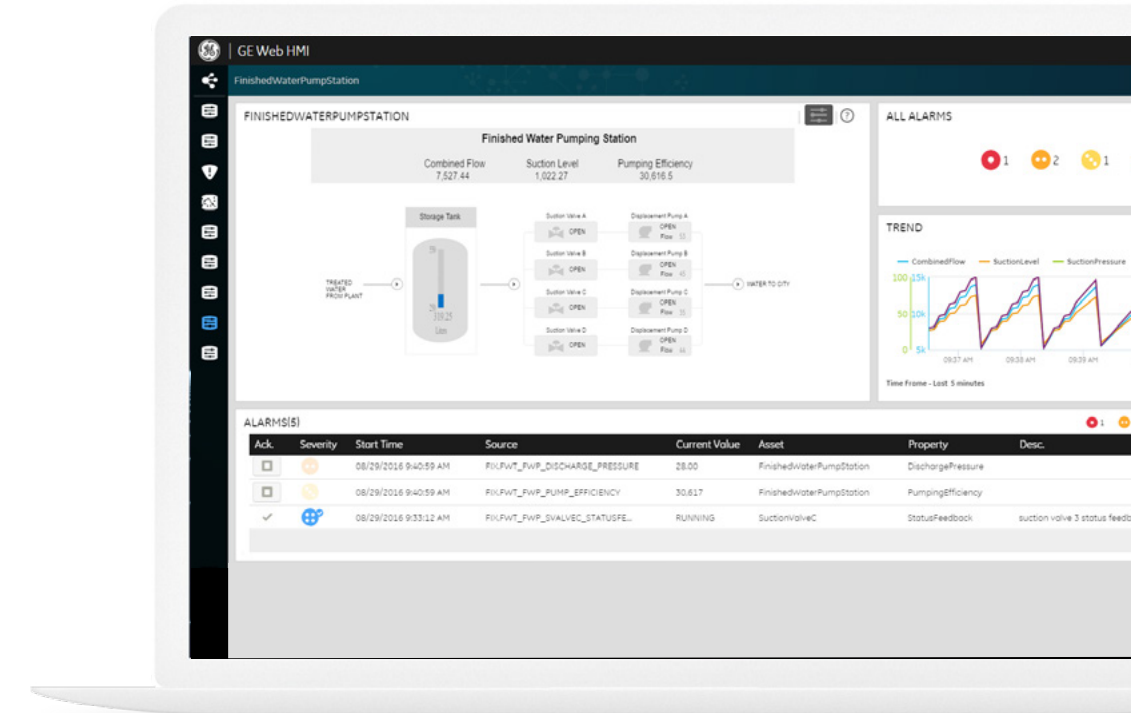
Designed to the Efficient HMI guidelines, iFIX 5.8 R2 changes the HMI experience to enable decision support for the user. The overall HMI layout is designed to provide the operators with the most informed view of the problem or task at hand. Each window of the layout provides a different perspective/view on the displayed asset, interchangeable for a personalized experience.

### 03 Reduce time to solution with Efficient HMI out of the box

To help engineers create the right user experience, iFIX 5.8 R2 contains pre-defined objects and templates designed using Efficient HMI concepts. Effective layouts are also available out of the box. Designing your HMI has never been so easy, speeding time to solution and maintenance. Additionally, iFIX 5.8 R2 introduces a unique concept of flexible assembly of graphical content using external HTML5 editors.

*"iFIX is the easiest way to hook to a variety of things. ... We haven't found anything that iFIX couldn't overcome."*

**John Franklin, Logic Systems Administrator,  
Arizona Electric Power Cooperative**



Designed to the Efficient HMI guidelines, iFIX 5.8 R2 improves operator decision making and speeds response.

### 04 Achieve visualization where you need it with native responsive web design

The HTML5 user interface produced using iFIX 5.8 R2 is native web out-of-the-box and supports the responsive design concepts. The displays support multi-touch and can scale to adapt to various form factors and orientations where the HMI will be viewed, from small to large high resolution screens.

### 05 Save time with zero deployment clients with centralized management

iFIX 5.8 R2 is a true native web HMI. Web clients do not require any client side installation. The configuration, development and deployment are all centralized, and any updates/changes are automatically reflected on the clients. The clients can be initiated through a browser or kiosk sessions and always start with the latest software updates deployed on the server.

# iFIX 5.8 R2 from GE Digital



## Driving Decision Support for Operators with High Performance Visualization

### Features

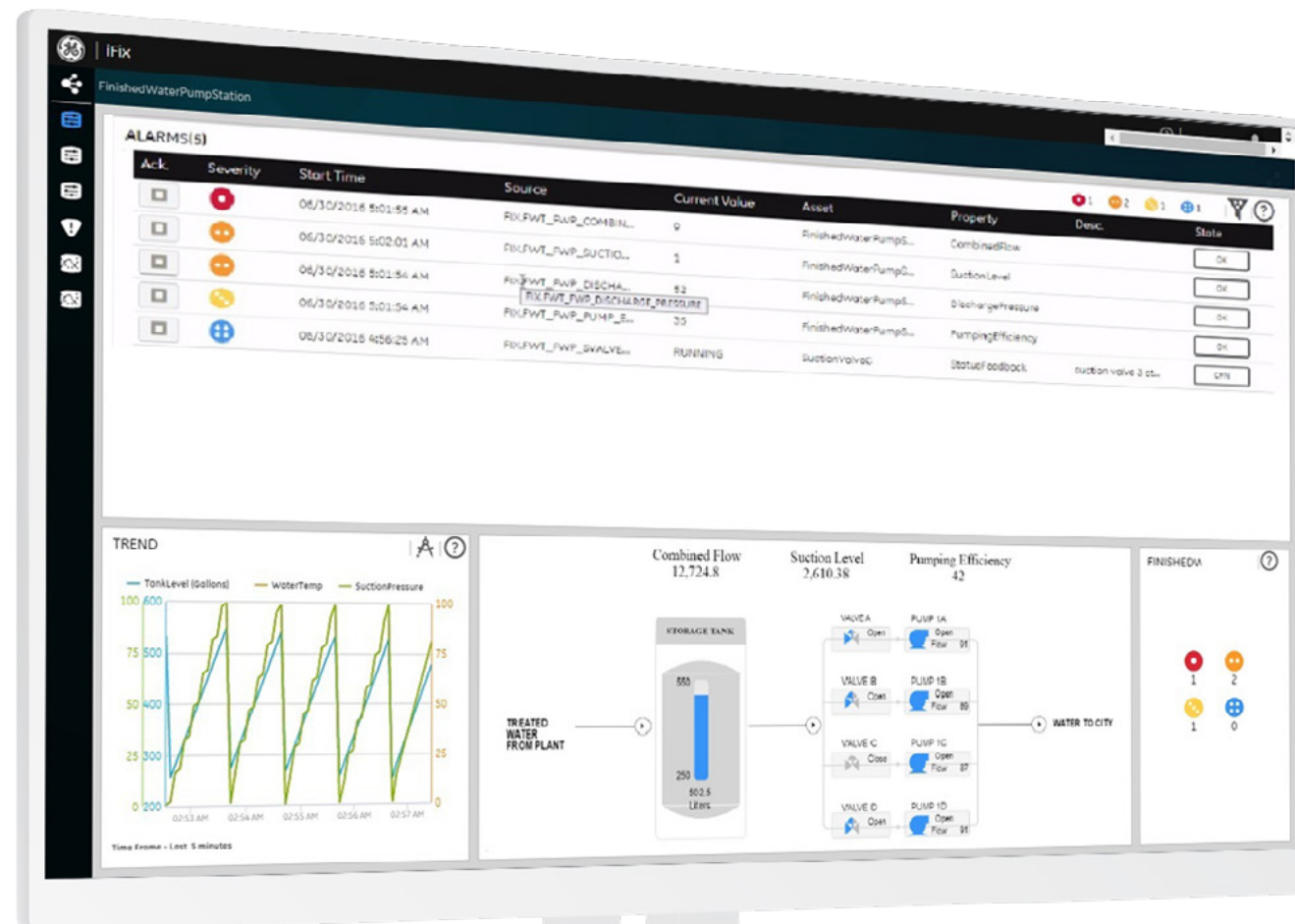
- Never start with a blank sheet of paper, improve efficiency by starting with a model
- Native Web HMI
- Structured asset model mapped to the SCADA database
- HTML5 object library for a more efficient HMI
- HTML5 content generation from the workspace
- Base API to consume external HTML5 content
- Standard layouts and cards such as trends, alarms, alarms summary, KPIs, and more
- Multi-touch alarm & trend viewer
- Local, remote over LAN, WAN or Internet connections, including VPN
- Encrypted communication from your Web client using SSL / digital certificate, IT security friendly, and cloud ready

### Hardware Requirements

- A 2.0 GHz Intel® Core™2 Duo Processor or better computer. For better performance, GE Digital recommends a minimum 3 GHz computer with 4 GB memory or greater. Be aware that the computer must be at least Dual-Core; a single core is not supported (with or without hyper-threading).
- A minimum of 2 GB RAM. For better performance, please consider using more.
- A minimum of 10 GB of free hard drive space for iFIX pictures, databases, alarm files, and other data files.

### Software Requirements

- Qualified HTML5 browsers
- One of the following operating systems:
  - Microsoft® Windows® 10
  - Microsoft® Windows® Embedded Standard 7
  - Microsoft® Windows® 8 (32-bit or 64-bit)
  - Microsoft® Windows® 7 (32-bit or 64-bit)
  - Microsoft® Windows® Server 2012
  - Microsoft® Windows® Server 2008 R2
  - Microsoft® Windows® Server 2008 (32-bit)
  - Microsoft® Windows® Vista™
- Network interface software for TCP/IP network communication and certain I/O drivers.
- An I/O driver for SCADA servers. GE Digital supplies I/O drivers for many programmable controllers.



Hardware and software requirements are representative and may vary by customer deployment. Please consult the product documentation for more details.

Today's SCADA is not just monitoring and visualization, with alarms rolling in. iFIX 5.8 R2 can optimize your operations for active decision support—enabling your team to achieve critical business outcomes.

LEARN MORE

Each window of the layout provides a different perspective/view on the displayed asset, interchangeable for a personalized experience.



# iFIX 5.8 R2 from GE Digital

## Driving Decision Support for Operators with High Performance Visualization

### Services

In the world of the Industrial Internet of Things (IIoT), organizations are able to optimize productivity, reduce costs, and achieve operational excellence. While this is an exciting time for opportunity and growth, it can also bring on new challenges, questions, and uncertainty. No matter where you are on your IIoT journey, GE Digital and its experienced global partners have the right services offering for you.

[Advisory Services](#) We can help you plan and start your IIoT journey with fourth generation HMI/SCADA in a way that aligns to your specific business outcomes.

[Managed Services](#) We can help you maintain your critical machines from one of our remote locations around the world using model-based predictive-analytic technology.

[Implementation Services](#) Our experienced global Automation partners can implement a collaborative, multi-generational program that marries your existing investments to the right enhancements and technology.

[Education Services](#) We specialize in education services to ensure that you're leveraging our solutions to the fullest extent with our training and certificate programs.

[GlobalCare Support Services](#) Let us help by ensuring that your business continues to operate at its highest efficiency, all while mitigating risks to your investments.

[Wurldtech Security Services](#) Our solutions provide industrial-grade security for a wide range of OT network and application topologies.

#### About GE

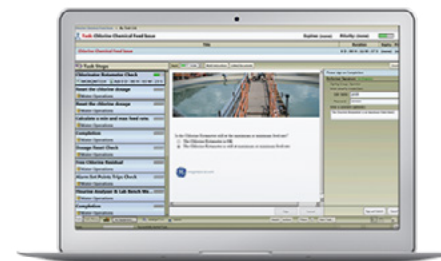
GE (NYSE: GE) is the world's Digital Industrial Company, transforming industry with software-defined machines and solutions that are connected, responsive and predictive. GE is organized around a global exchange of knowledge, the "GE Store," through which each business shares and accesses the same technology, markets, structure and intellect. Each invention further fuels innovation and application across our industrial sectors. With people, services, technology and scale, GE delivers better outcomes for customers by speaking the language of industry.

©2016 General Electric. All rights reserved. \*Trademark of GeneralElectric. All other brands or names are property of their respectiveholders. Specifications are subject to change without notice. 09 2016

### Take charge of operations with decision support HMI/SCADA

First, leverage HMI/SCADA as the foundation for an efficient operation. Then, drive the right response on the alarms that matter. Finally, increase consistency and conformance to standards, improving accountability on task completion and preventing mistakes.

### Related Products



#### [Workflow](#)

GE Digital's Workflow helps you prevent mistakes, reduce response times, and optimize processes for greater productivity, less risk, and higher quality.

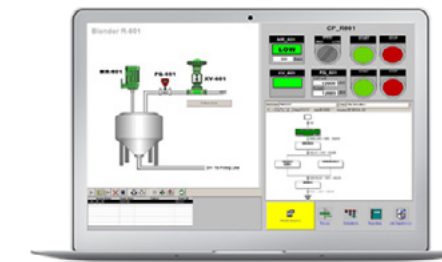


#### [Mobile](#)

Take industrial automation to a new level with GE Digital's Mobile Apps, transforming operational data into actionable information, accessible anywhere, anytime.

### Continue your IIoT Journey

Transforming your business requires foundational innovations that lay the groundwork for future success. It requires connecting assets and processes securely to drive operational efficiencies, reduce unplanned downtime and improve performance.



#### [Batch Execution](#)

Does your process need a recipe for consistent success? With Batch Execution, gain the security, flexibility and ease of use to reduce costs, increase quality and boost profitability.



#### [Historian](#)

Get Predix IIoT connectivity and data management with Historian, which optimizes asset and plant performance through time series industrial data collection and aggregation.

#### Contact

Americas: 1-855-YOUR1GE (1-855-968-7143)  
gedigital@ge.com  
[www.ge.com/digital](http://www.ge.com/digital)